

Report No. : MAN:TR:7530011891

DATE : 19/08/2016

PROMINANCE uPVC PROFILES  
CAPTIV FENESTRATION,S.F NO-207/1B,1C, APPANAIKENPATTI, SULUR  
COIMBATORE-641402  
INDIA



CONTACT PERSON : MR. DEVARAJAN

THE FOLLOWING SAMPLE(S) WAS/WERE SUBMITTED AND IDENTIFIED BY/ON BEHALF OF THE CUSTOMER AS :

SAMPLE DESCRIPTION uPVC PROFILE

QUOTE NO PC/290/1607/V0

COUNTRY OF ORIGIN INDIA

SAMPLE RECD ON 09/08/2016

TESTING PERIOD : 12/08/2016 - 16/08/2016

TEST(S) REQUESTED ROHS TEST

Test Requested : Selected test (s) as requested by client.  
Test Method : Please refer to next page(s).  
Test Result(s) : Please refer to next page(s).

**Conclusion** Based on the performed tests on selected part of submitted samples, the results of Lead, Mercury, Cadmium, Hexavalent chromium, Polybrominated biphenyls (PBB), Polybrominated diphenyl ethers (PBDE) comply with the limits as set by RoHS Directive 2011/65/EU Annex II; recasting 2002/95/EC.

Per Pro SGS India Pvt Ltd.

A handwritten signature in blue ink, appearing to read "Kapil Patil".

**Authorized Signatory**  
**Kapil Patil**  
**(Asst. Manager- Chemical)**  
Email your Test Report Related Enquiries at [Feedback.HLT@sgs.com](mailto:Feedback.HLT@sgs.com)



## TEST REPORT

Report No. : MAN:TR:7530011891

DATE : 19/08/2016



Test result :  
ID for sample : 7480011891  
Description for sample : uPVC PROFILE

Test Item(s):	Unit	Test Method	Results	MDL	Limit
Cadmium(Cd)	mg/kg	With reference to IEC 62321-5:2013 (Determination of Cd by ICP-OES)	n.d.	5	100
Lead (Pb)	mg/kg	With reference to IEC 62321-5:2013 (Determination of Pb by ICP-OES)	n.d.	5	1000
Mercury (Hg)	mg/kg	With reference to IEC 62321-4:2013 (Determination of Hg by ICP-OES)	n.d.	5	1000
Hexavalent Chromium (CrVI)	mg/kg	With reference to IEC 62321:2008 (Determination of CrVI by UV-VIS)	n.d.	2	1000
<b>Sum of PBBs</b>	mg/kg	With reference to IEC 62321:2008 (Determination of PBB by GC-MS)	<b>n.d.</b>	-	1000
Monobromobiphenyl	mg/kg	With reference to IEC 62321:2008 (Determination of PBB by GC-MS)	n.d.	50	-
Dibromobiphenyl	mg/kg	With reference to IEC 62321:2008 (Determination of PBB by GC-MS)	n.d.	50	-
Tribromobiphenyl	mg/kg	With reference to IEC 62321:2008 (Determination of PBB by GC-MS)	n.d.	50	-
Tetrabromobiphenyl	mg/kg	With reference to IEC 62321:2008 (Determination of PBB by GC-MS)	n.d.	50	-
Hexabromobiphenyl	mg/kg	With reference to IEC 62321:2008 (Determination of PBB by GC-MS)	n.d.	50	-
Pentabromobiphenyl	mg/kg	With reference to IEC 62321:2008 (Determination of PBB by GC-MS)	n.d.	50	-
Heptabromobiphenyl	mg/kg	With reference to IEC 62321:2008 (Determination of PBB by GC-MS)	n.d.	50	-
Octabromobiphenyl	mg/kg	With reference to IEC 62321:2008 (Determination of PBB by GC-MS)	n.d.	50	-
Nonabromobiphenyl	mg/kg	With reference to IEC 62321:2008	n.d.	50	-

JOE No. : 1653802814

Page 2 of 7

Control No.:7535010904

This document is issued by the Company under its General Conditions of Service printed overleaf or available on request and accessible at [http://www.sgs.com/terms\\_and\\_conditions.htm](http://www.sgs.com/terms_and_conditions.htm) and Terms and Conditions for electronic documents [www.sgs.com/terms\\_e-document.htm](http://www.sgs.com/terms_e-document.htm). Attention is drawn to the limitation of liability, indemnification and jurisdiction issues defined therein. Any holder of this document is advised that information contained hereon reflects the Company's findings at the time of its intervention only and within the limits of Client's instructions, if any. The Company's sole responsibility is to its Client and this document does not exonerate parties to a transaction from exercising all their rights and obligations under the transaction documents. Any unauthorized alteration, forgery or falsification of the content or appearance of this document is unlawful and offenders may be prosecuted to the fullest extent of the law.

Unless otherwise stated the results shown in this test report refer only to the sample(s) tested and such sample(s) are retained for 30 days only. This document cannot be reproduced except in full, without prior approval of the Company.



		(Determination of PBB by GC-MS)			
Decabromobiphenyl	mg/kg	With reference to IEC 62321:2008 (Determination of PBB by GC-MS)	n.d.	50	-
<b>Sum of PBDEs</b>	mg/kg	With reference to IEC 62321:2008 (Determination of PBDEs by GC-MS)	<b>n.d.</b>	-	1000
Monobromodiphenyl ether	mg/kg	With reference to IEC 62321:2008 (Determination of PBDEs by GC-MS)	n.d.	50	-
Dibromodiphenyl ether	mg/kg	With reference to IEC 62321:2008 (Determination of PBDEs by GC-MS)	n.d.	50	-
Tribromodiphenyl ether	mg/kg	With reference to IEC 62321:2008 (Determination of PBDEs by GC-MS)	n.d.	50	-
Tetrabromodiphenyl ether	mg/kg	With reference to IEC 62321:2008 (Determination of PBDEs by GC-MS)	n.d.	50	-
Pentabromodiphenyl ether	mg/kg	With reference to IEC 62321:2008 (Determination of PBDEs by GC-MS)	n.d.	50	-
Hexabromodiphenyl ether	mg/kg	With reference to IEC 62321:2008 (Determination of PBDEs by GC-MS)	n.d.	50	-
Heptabromodiphenyl ether	mg/kg	With reference to IEC 62321:2008 (Determination of PBDEs by GC-MS)	n.d.	50	-
Octabromodiphenyl ether	mg/kg	With reference to IEC 62321:2008 (Determination of PBDEs by GC-MS)	n.d.	50	-
Nonabromodiphenyl ether	mg/kg	With reference to IEC 62321:2008 (Determination of PBDEs by GC-MS)	n.d.	50	-
Decabromodiphenyl ether ##	mg/kg	With reference to IEC 62321:2008 (Determination of PBDEs by GC-MS)	n.d.	50	-

Note :-

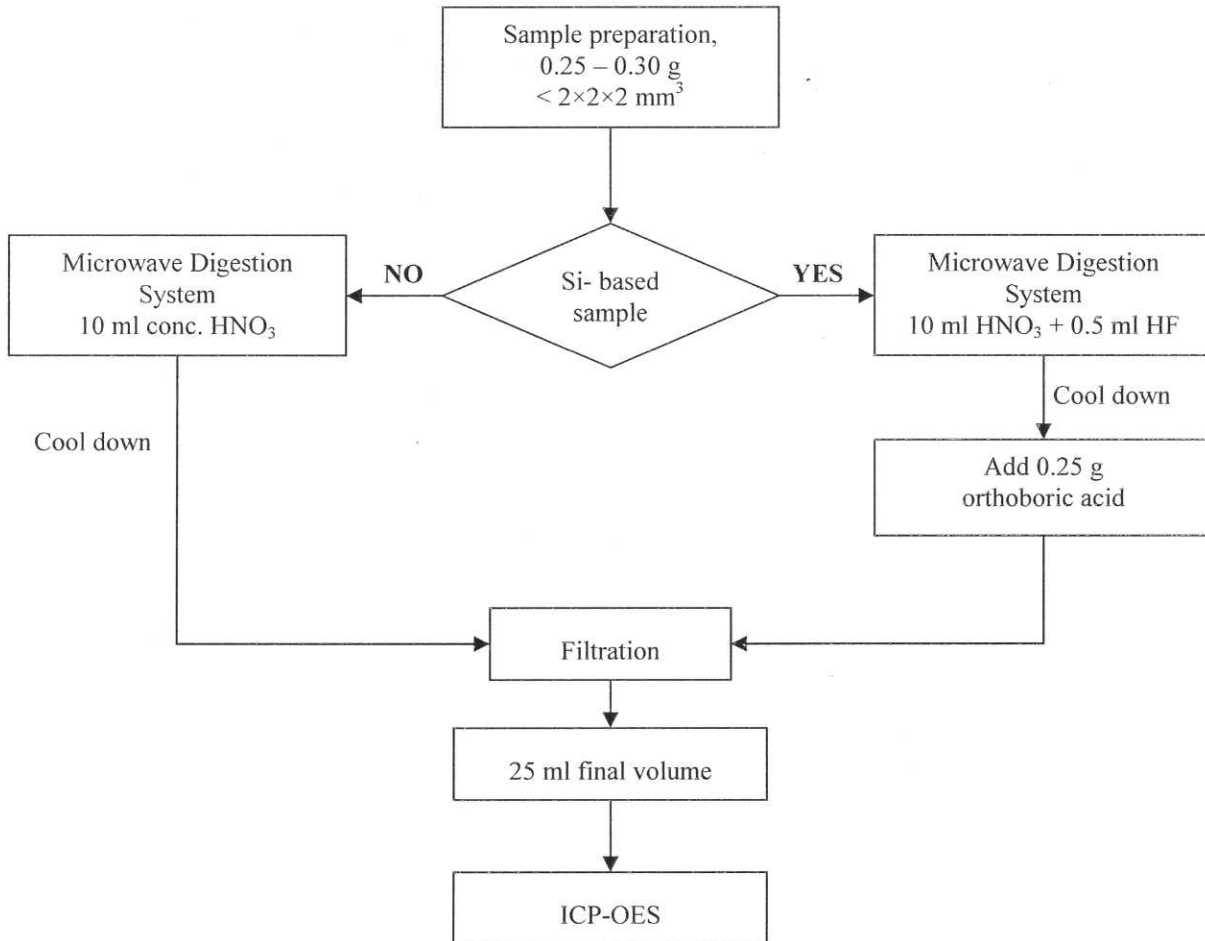
- (a) mg/kg = ppm ; 0.1wt% = 1000ppm
- (b) n.d.= not detected
- (c) MDL = Method Detection Limit
- (d) ## = The exemption of DecaBDE in polymeric application according 2005/717/EC was overruled by the European Court of Justice by its decision of 01.04.2008. Subsequently DecaBDE is included in the sum of PBDE after 01.07.2008
- (e) - = not regulated

This document is issued by the Company under its General Conditions of Service printed overleaf or available on request and accessible at [http://www.sgs.com/terms\\_and\\_conditions.htm](http://www.sgs.com/terms_and_conditions.htm) and Terms and Conditions for electronic documents [www.sgs.com/terms\\_e-document.htm](http://www.sgs.com/terms_e-document.htm). Attention is drawn to the limitation of liability, indemnification and jurisdiction issues defined therein. Any holder of this document is advised that information contained hereon reflects the Company's findings at the time of its intervention only and within the limits of Client's instructions, if any. The Company's sole responsibility is to its Client and this document does not exonerate parties to a transaction from exercising all their rights and obligations under the transaction documents. Any unauthorized alteration, forgery or falsification of the content or appearance of this document is unlawful and offenders may be prosecuted to the fullest extent of the law.

Unless otherwise stated the results shown in this test report refer only to the sample(s) tested and such sample(s) are retained for 30 days only. This document cannot be reproduced except in full, without prior approval of the Company.



**Process Flow for analysis of metal contents in plastics, metals and electronic components sample**

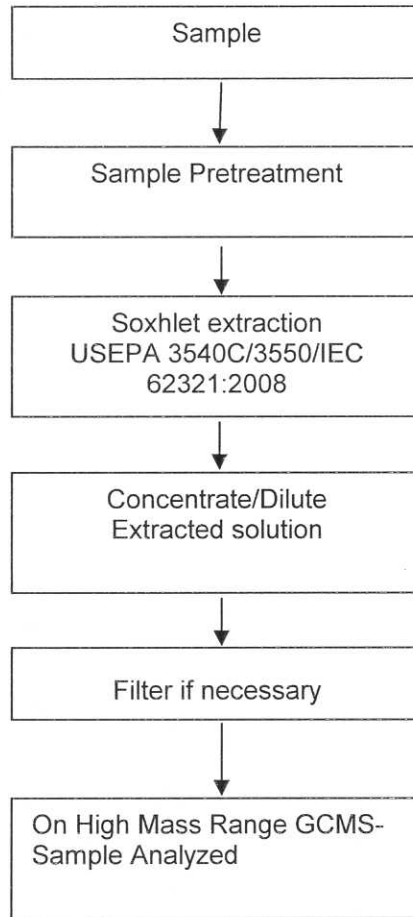


Analyzed By: Suman Mandrwal

Checked By: Kapil Patil



**Process Flow for analysis of Flame Retardants in plastics, metals and electronic components sample**



Analyzed By: Suman Mandrwal

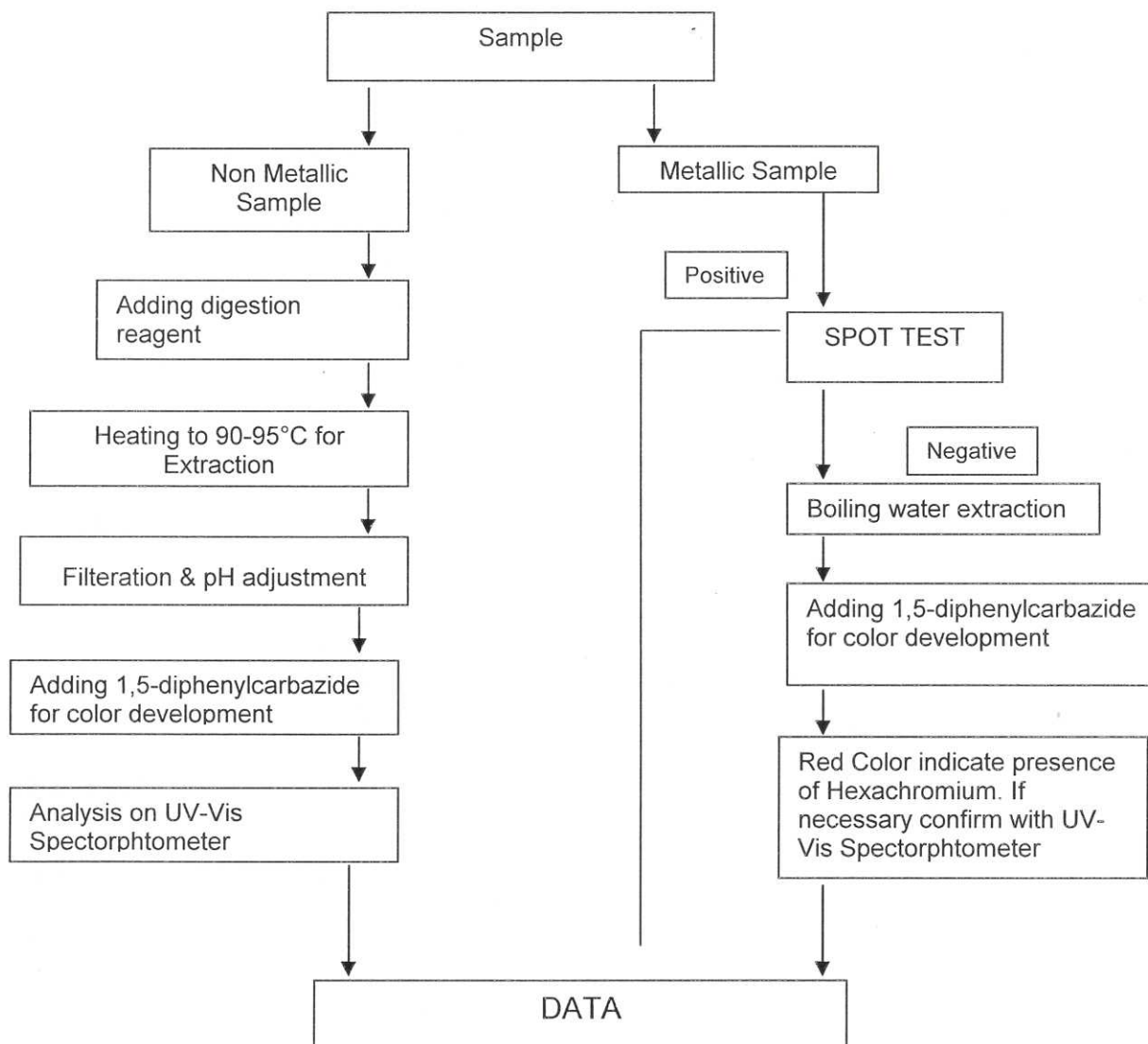
Checked By: Kapil Patil

This document is issued by the Company under its General Conditions of Service printed overleaf or available on request and accessible at [http://www.sgs.com/terms\\_and\\_conditions.htm](http://www.sgs.com/terms_and_conditions.htm) and Terms and Conditions for electronic documents [www.sgs.com/terms\\_e-document.htm](http://www.sgs.com/terms_e-document.htm). Attention is drawn to the limitation of liability, indemnification and jurisdiction issues defined therein. Any holder of this document is advised that information contained hereon reflects the Company's findings at the time of its intervention only and within the limits of Client's instructions, if any. The Company's sole responsibility is to its Client and this document does not exonerate parties to a transaction from exercising all their rights and obligations under the transaction documents. Any unauthorized alteration, forgery or falsification of the content or appearance of this document is unlawful and offenders may be prosecuted to the fullest extent of the law.

Unless otherwise stated the results shown in this test report refer only to the sample(s) tested and such sample(s) are retained for 30 days only. This document cannot be reproduced except in full, without prior approval of the Company.



**Process Flow for analysis of Hexavalent chromium contents in plastics, metals and electronic components sample**

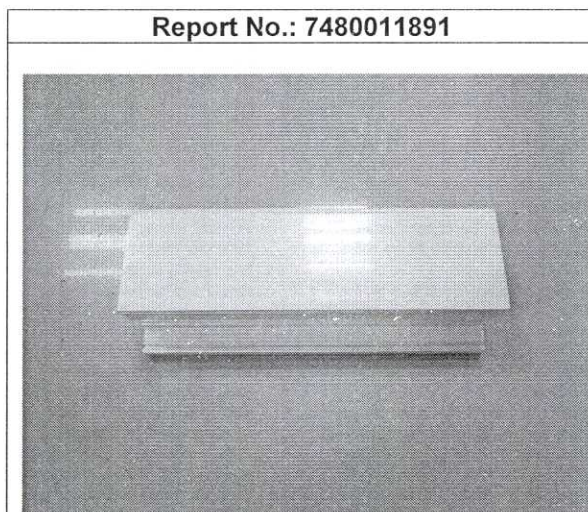


Analyzed By: Suman Mandrwal

Checked By: Kapil Patil



Sample Photo: as received



SGS authenticate the photo on original report only.

**Note** : Test performed as per the conditions given by the client.  
Above Test subcontracted to **SGS approved lab.**

\*\*\* End of Report \*\*\*